
Community Safety Partnership

GMP Tameside East Neighbourhood Strategy 2021-2023

Tameside Community Safety Strategy

The Community Safety Strategy has 5 key priorities:

- Building stronger communities
- Preventing and reducing violent crime, knife crime & domestic abuse
- Preventing and reducing crime & anti-social behaviour
- Preventing and reducing the harm caused by drugs & alcohol
- Protecting vulnerable people and those at risk of exploitation

GMP Tameside East



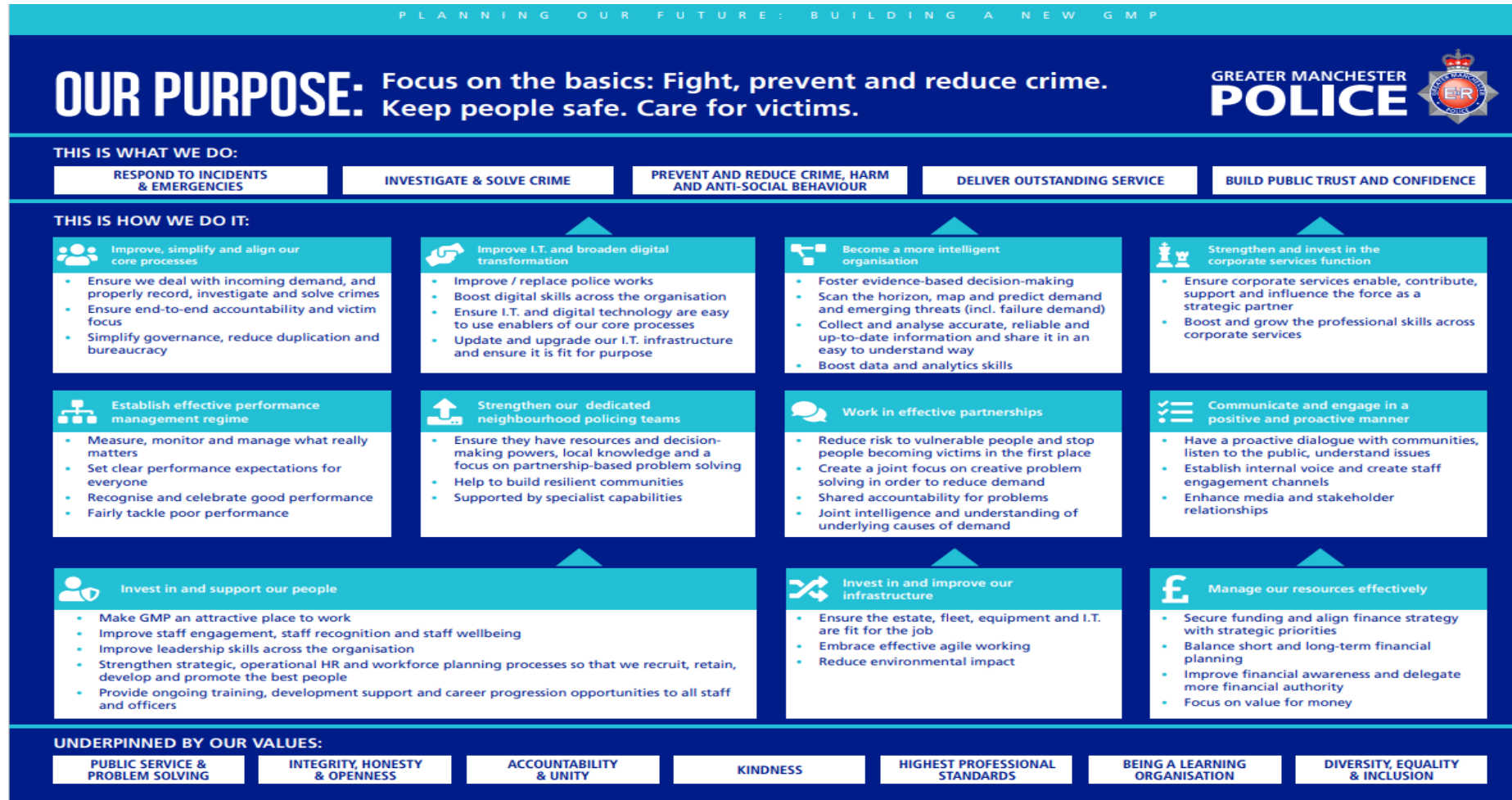
TAMESIDE EAST

DUKINFIELD, STALYBRIDGE & MOSSLEY

INSPECTOR ANDREW MOSS

Andrew.Moss@gmp.police.uk

Building a New GMP – Strategic Plan



Building a New GMP – Public Promises



RESPOND TO INCIDENTS AND EMERGENCIES

- 999 and 101 call waiting times will be shorter.
- You will be able to report a crime or incident online so you don't have to phone 101.
- You will be able to report problems in your area online directly to your neighbourhood policing team.
- If you are a victim of crime we will deliver the Victims' Code. You will be given the contact details of the police officer who is looking after your case. They will keep you informed of any progress and you will not have to call 101 for updates.
- If you have an emergency we will get to you more quickly.

Building a New GMP – Public Promises



PREVENT AND REDUCE CRIME, HARM AND ANTI-SOCIAL BEHAVIOUR

- You will see monthly high profile operations that target the problems we know you care about.
- Every area will have a neighbourhood policing team including named officers responsible for local policing.
- You will be able to contact your neighbourhood policing team directly.
- A proportion of our neighbourhood policing team resources will be ring-fenced and they will only undertake duties that are focused on addressing local concerns.
- We will focus extra help for people who are particularly vulnerable to the risk of harm, for example, people targeted by hate crime; people who are repeatedly targeted; or people who have reduced ability to keep themselves safe.

Building a New GMP – Public Promises



INVESTIGATE AND SOLVE CRIME

- We will investigate all crimes and follow-up every reasonable line of enquiry.
- Every burglary will be attended by a police officer and followed up with an investigation.
- More criminals will be arrested.
- You will see us relentlessly pursue the disruption of serious and organised crime.
- We will seize more assets from criminals. If you are acting criminally you can expect us to seize your house, your car and your cash when we catch you.

Building a New GMP – Public Promises



DELIVER OUTSTANDING PUBLIC SERVICE

- We have invested in strengthening our leadership: every district will be led by a Chief Superintendent. You will know their names and be able to contact them.
- You will feel like we care about you. More victims of crime will be satisfied with how we look after them.
- Officers and staff do their jobs to the highest professional standards: we will have fewer complaints about poor service.
- You will see your neighbourhood policing team working with your council, the NHS and other organisations to solve problems that affect crime and anti-social behaviour in your area.
- Officers and staff will be well equipped to do their jobs well.

Building a New GMP – Public Promises



BUILD PUBLIC TRUST AND CONFIDENCE

- You will have been invited to join in a public consultation to give us your views on what you want from our neighbourhood policing function.
- You will be able to speak to us regularly to tell us what issues you want us to address in your neighbourhood. What we do in your neighbourhood will be informed by what you tell us.
- We will proactively communicate with you to tell you what we are doing.
- We will deliver proportionate and fair policing where our tactics and use of force is not greater than the risk we are trying to address. We will publish data on how we are performing.
- Local forums and other panels will be strengthened to widen public scrutiny and we will take part in a bi-annual GMP accountability session with elected representatives and the monthly Mayor's Question Time.

GMP – What We Are Doing



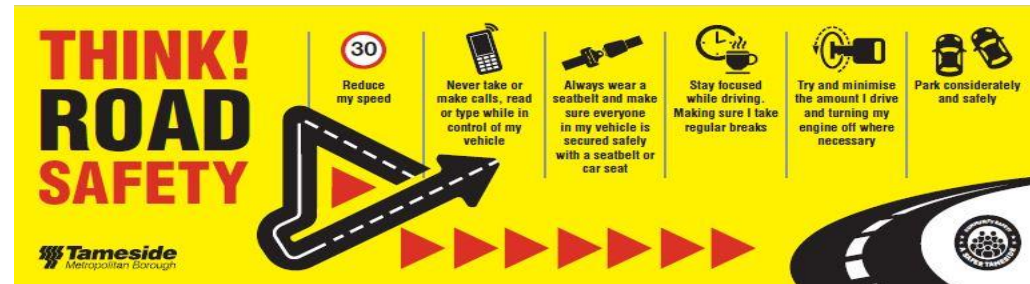
- ✓ *Arresting more offenders*
 - ✓ *Conducting more warrants*
 - ✓ *Seizing more drugs*
 - ✓ *Seizing more vehicles*
 - ✓ *Issuing more traffic offence tickets*
 - ✓ *Reducing anti-social behaviour*
 - ✓ *Being more problem focused*
 - ✓ *More engagement*
- ❖ *And we will continue to do this and more.....*



Road Safety



- Road Safety Working Group
- Road Safety campaign
- Road Safety Pledge



Hate Crime

- Promotion of National Hate crime awareness raising campaign
- Ongoing delivery of Hate Crime Awareness sessions to partners



Community Safety Partnership Grant Funding

13 projects funded in 2021 / 22

- ★ Arts Awards
- ★ Active Citizens
- ★ Road Safety
- ★ StoryMakers
- ★ Daisy Chain
- ★ Safe Squad
- ★ Personal Safety / Conflict Management Training
- ★ Our Day – Roll over project from 2020/21 – due to covid restrictions
- ★ Here comes Tango
- ★ BREE
- ★ Theatre Tracks
- ★ Ashton United In The Community
- ★ Odd Arts
- ★ JJ Effect



Works in the Community



Working in partnership with continues with the aim of creating a safer, stronger, and active community where crime and anti-social behaviour is less likely to happen. There are 62 schemes registered through the Council and we are looking to build on that www.tamesidenwa.co.uk

The CSP funded the purchase of a vehicle for Ashton United In The Community (AUITC) which will be used to support the delivery of a series of community engagement projects, along with pop up events where the partners involved will have the means to promote current community safety awareness messages



Thank you

Divisional Chief Inspector Lee Broadstock
lee.broadstock2@gmp.police.uk

Partnership Manager - Dave Smith
dave.smith@tameside.gov.uk